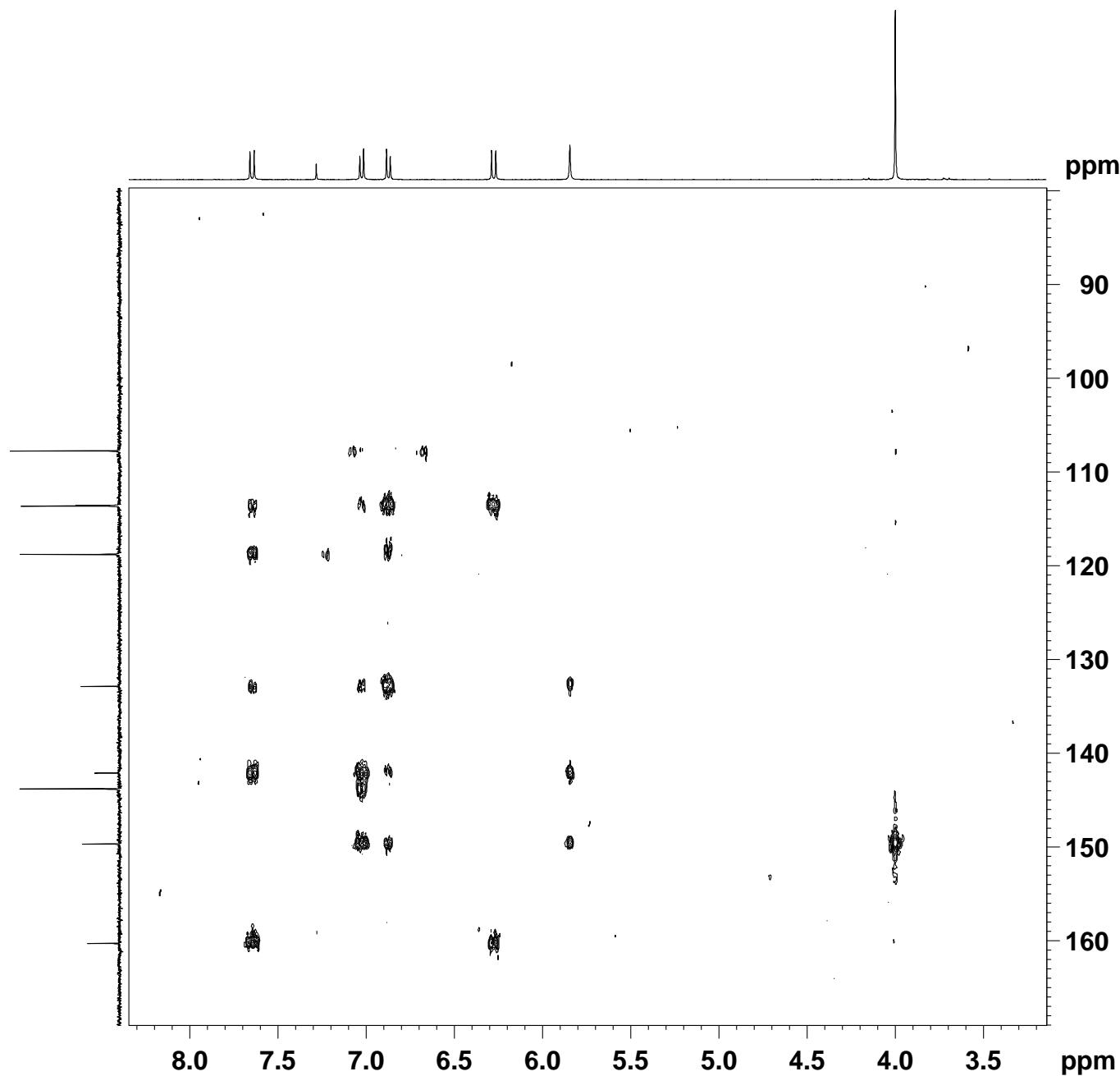


1282-1
HMBC



```
Current Data Parameters
NAME      1282-1
EXPNO    3
PROCNO   1
DU       /m
USER     quamar

F2 - Acquisition Parameters
Date_    20110111
Time     13.05
INSTRUM  DFX400
PROBHD   5 mm BBO BB-1H
PULPROG  hmbcetgp12nd
TD       2048
SOLVENT  CDCl3
NS       8
DS       1
SWH      4006.410 Hz
FIDRES   1.956255 Hz
AQ       0.2556404 sec
RG       16384
DW       124.800 usec
DE       6.00 usec
TE       298.2 K
CNST6    145.0000000
CNST7    160.0000000
CNST13   8.0000000
CNST30   0.5981122
d0        0.0000300 sec
d1        2.0000000 sec
d6        0.0625000 sec
d16       0.0002500 sec
DELTA1   0.00219828 sec
DELTA2   0.00187500 sec
DELTA3   0.06124500 sec
DELTA4   0.00003300 sec
IN0      0.00002260 sec
STICNT   64

===== CHANNEL f1 =====
NUC1     1H
P1       13.50 usec
P2       27.00 usec
PL1     -3.00 dB
SFO1    400.2470012 MHz

===== CHANNEL f2 =====
NUC2     13C
P3       7.00 usec
P24     2000.00 usec
PL2     -3.00 dB
SFO2    100.6527556 MHz
SP7     12.00 dB
SFOAL7  Crp80comp,4
SFOAL7  0.500
SPOFFS7 0.00 Hz

===== GRADIENT CHANNEL =====
GPNAM1   SINE.100
GPNAM3   SINE.100
GPNAM4   SINE.100
GPNAM5   SINE.100
GPZ1     80.00 %
GPZ3     15.00 %
GPZ4    -10.00 %
GPZ5     -5.00 %
P16     1000.00 usec

F1 - Acquisition parameters
ND0     2
TD      128
SFO1    100.6528 MHz
FIDRES   172.842926 Hz
SW       219.804 ppm
FnMODE   Echo-Antiecho

F2 - Processing parameters
SI      2048
SF      400.2450000 MHz
WDW     SINE
SSB     2
LB      0.00 Hz
GB      0
PC      1.40

F1 - Processing parameters
SI      1024
MC2     echo-antiecho
SF      100.6416850 MHz
WDW     SINE
SSB     2
LB      0.00 Hz
GB      0
```