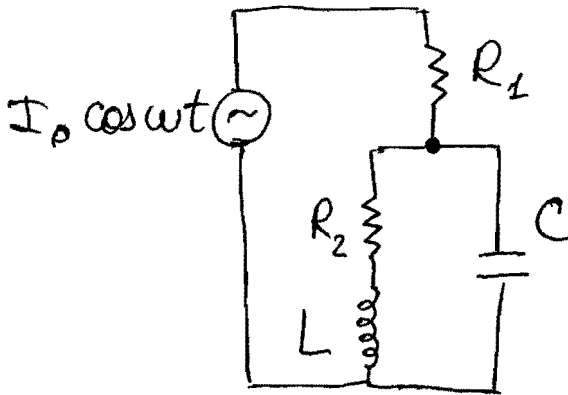


Homework #2

(due Monday, October 5, 2009)

1. (10 pts) Consider an ac circuit below.
 - (a) What is the total impedance ?
 - (b) If the frequency ω is chosen so that $\omega = 1/\sqrt{LC}$, then what is the phase lag between the current and the voltage?



2. Reading assignment: Chapters 4.1-4.2 of R, H & B.